

organized by:



1967-2007
Lingnan 嶺南大學
University

Conference Programme Book

1st

Asia Pacific Regional Conference on Service-Learning 第一屆亞太地區服務研習會議

30 May - 2 June, 2007

**Theory and Practice of Service-Learning:
Cross-Cultural Service-Learning Programme
in Asia- Pacific Region**

「亞太地區跨文化服務研習體驗：理論與實踐」

sponsored by:



Lingnan Foundation



The United Board for
Christian Higher Education

TABLE OF CONTENTS

Welcoming message / 2

Organisation / 3

- Conference Secretariat
- The Organisations behind the Conference

Conference Schedule / 5

- Background of the Conference
- Keynote Speakers
- Conference Schedule-at-a-Glance
- Conference Schedule in Details
- Information to Presenters
 - Conference Language
 - Panel Presentation
 - Poster Presentation
- Exhibitions

General Information / 17

- Meeting Arrangements
- Registration
 - Entitlements
 - Registration & Information Desk
 - General Information
- Accommodation
 - Hotel
 - Hostel
 - Reminders
- Transportation
 - How to reach Lingnan University
 - How to reach Hong Kong Airport
- Meal Arrangements
- Cultural & Tour Programme
- Map of Conference Venues
- Map of Lingnan University

WELCOME TO THE 1ST ASIA-PACIFIC REGIONAL CONFERENCE ON SERVICE-LEARNING IN HONG KONG

Welcome to Lingnan. This year we are doubly pleased to host the 1st Asia-Pacific Regional Conference on Service-Learning as we are celebrating our 40th anniversary in Hong Kong and 120th anniversary since its establishment in Guangzhou. This Service-Learning Conference forms part of our celebration programme.

Service-learning has been recognized as a unique teaching and learning strategy that integrates meaningful community service with instruction and reflection to enrich the learning experience, teach civic responsibility, and strengthen communities. This is primarily a western learning concept, but is now gaining awareness across cultures. In becoming a world-wide experience, service-learning has been increasingly adopted by educational institutions and social organizations in Asia-Pacific regions. Yet in this transition, Asian countries realized the unprecedented need to modify and adjust to this concept. In Hong Kong, Lingnan University and OSL play a crucial role in introducing the concept of service-learning. With the aim of constructing a model for academy-student-community partnership, we have made a remarkable attempt to truly put the inspirational slogan "Serving to Learn and Learning to Serve" into practice.

By highlighting service learning as an Asia-Pacific issue in the conference theme: 'Cross-Cultural Service-Learning Experiences in the Asia-Pacific Region: An Evolving Integration of Theory and Practice', we hope to involve and engage key stakeholders in theoretical development, and sharing of experiences and challenges faced in service-learning. In nurturing service-learning, this process of engagement can be achieved within the context of multi-locale perspectives and their respective social and cultural environments.

The Conference and related programmes expect gaining invaluable benefits from the inspiration, knowledge, and experience in service-learning within the Asia-Pacific region, national and international NGOs (especially in the field of community service-learning), and public and educational sectors involvement around the world. We would like to take this opportunity to express our appreciation to individuals and organizations around the globe whose contribution will make this the most stimulating and pioneering programme ever delivered to our delegates.

We are sure that your participation in this Conference will be fruitful and enjoyable, and that we will all return to our own countries inspired, stimulated and filled with new ideas and models to improve the environment, practice and understanding of service-learning related issues.



Prof. Alfred Cheung-Ming CHAN

Director

Office of Service Learning

Lingnan University



Dr. Carol Hok-Ka MA

Service-Learning Coordinator

Office of Service Learning

Lingnan University

Conference Secretariat



Office of Service Learning
GE103, General Education Building
Lingnan University.
Tuen Mun, New Territories,
Hong Kong

Telephone: (+852) 2616 8053
Fax: (+852) 2468 4807
E-mail: oslconf@ln.edu.hk
Website: www.ln.edu.hk/osl

The Organisations behind the Conference



Lingnan University (LU) adopts a whole-person approach to education which enables its students to think, judge, care, and ultimately, act responsibly in the changing circumstances of Hong Kong, the region and the world. Service-Learning is a concept that imparts practical meaning to Lingnan University's long-standing motto, "*Education for Service*". These Learning contexts facilitate and instil in students a lifelong commitment to SERVICE, RESEARCH and LEADERSHIP.



With encouragement from the community and tremendous support from the Lingnan University, the **Office of Service Learning (OSL)** was set up in 2006 to continue integrating the concept of Service-Learning (S-L) into the liberal arts curriculum. The expansion of S-L programmes not only realizes the university motto, but also promotes the concept of building a harmonious community.

The Sponsors



The United Board for Christian Higher Education in Asia works to support a Christian presence in colleges and universities in Asia through partnerships, grant support, and administered programmes. The work of the United Board centers on the Christian faith and higher education within Asia. The United Board emphasizes two strategic initiatives in its program, which complement and often overlap one another: support for faculty and leadership development and, support for linkages and networks among institutions of higher education.



Lingnan Foundation, formerly the Trustees of Lingnan University, was first incorporated in the State of New York in 1893 to support the development of a college in Guangzhou, China, which later became Lingnan University. The Foundation's ties with institutions and educators in South China, cultivated over decades, form the basis for its programmes. The Foundation seeks to draw upon its roots as an institution that incorporates both Chinese and American values and pedagogy and strives to be a catalyst for educational innovation and reform.

BACKGROUND OF THE CONFERENCE

Service-Learning is the powerful pedagogy of uniting academic study and volunteer service. It is gaining momentum in secondary and tertiary institutions around the world. The Office of Service Learning at Lingnan University will bring together educators, students and service providers from around the world with the goals to: 1. provide a forum to share, and learn from, service-learning programmes provided locally, regionally, and globally, and 2. explore how these diverse service-learning programmes can contribute towards the building of harmonious social climate, specifically within the Asia-Pacific Region.

Focusing on the Asian experience, the Conference offers Plenary Session, Seminar Session, Poster Session and Student Forum; visits to local service agencies and optional sight-seeing tours.

KEYNOTE SPEAKERS



Prof. Edward Kwan-Yiu CHEN, educated at Hong Kong University (B.A., M.Soc.Sc.) and Oxford University (D.Phil.), is currently president of Lingnan University. He is the 1st person integrating the concept of service-learning into liberal art education in Hong Kong. He is currently Chairman of the Hong Kong Committee for Pacific Economic Cooperation and the Hong Kong Press Council.



Prof. Jane Szutu PERMAUL, a life time student of higher education focused on student and organisation development, developed service-learning at the University of California, Los Angeles (UCLA) and nationally worked with other service-learning pioneers in exploring the challenges of integrating community service and action with academic learning, beginning in the late 1960's to today. Her international and intercultural interests continue through her capacity as a Trustee of the Lingnan Foundation.



Dr. Kim Xuan Ng NGUYEN coordinates the programme on youth at the United Nations ESCAP, which is the regional arm of the United Nations for Asia and the Pacific, and has conducted extensive review and analysis on youth policy in various countries in the region, particularly in the areas of youth development and employment. She has also worked on strengthening social integration and partnerships with civil society organisations in Asia.



Dr. Jun XING is Vice President for Programmes at the United Board for Christian Higher Education in Asia. Before assuming his present position, Dr. Xing was a full professor and director of academic affairs at Oregon State University. He has taught service-learning seminars in the U.S. and Asia.

CONFERENCE SCHEDULE-AT-A-GLANCE

29 May 2007 (Tuesday)	
P.M. 2:00 – 6:00	Conference Registration (MBG09, Main Building, LU)
	Hostel Check-in (MBG10, Main Building, LU)
7:00 – 12 midnight	Hostel Check-in (Hall B, Student Hostel, LU)

30 May 2007 (Wednesday)	
A.M. 8:30 – 9:00	Pre-Conference Workshop: Breakfast (Student Canteen, Amenities Building, LU)
8:30 – 6:00	Pre-Conference Workshop Ethical Issues and Cross-Cultural Dimensions in Service-Learning
	Conference Registration (MBG09, Main Building, LU)
	Hostel Check-in (MBG10, Main Building, LU)
P.M. 7:00 – 12 midnight	Hostel Check-in (Hall B, Student Hostel, LU)

31 MAY 2007 (Thursday)			
A.M. 8:30 – 9:30	Conference Registration (MBG09, Main Building, LU)		
9:30 – 10:00	Opening Ceremony (MBG22, Main Building, LU)		
10:00 – 12:00	<p>Plenary Session 1 (Keynote Speeches) Establishing a Global Perspective on Service-Learning: Thoughts, Issues, Engagement and Operation Model (MBG22, Main Building, LU)</p> <p>Youth Development in Asia: Education, Participation and Public Services Presenter: Dr. Kim Xuan Thi NGUYEN, Population and Social Integration Section Emerging Social Issues Division, United Nations Economic and Social Commission for Asia and the Pacific (ESCAP)</p> <p>Win, Win, Win: For the Learner, the Community and the University Presenter: Prof. Jane S. PERMAUL, Assistant Vice Chancellor Emeritus, Student Affairs Administration, Adjunct Professor, Education, University of California Los Angeles, CA, USA, Trustee of Lingnan Foundation</p> <p>Local Goes Global: Service-Learning and Cross-Cultural Competency Presenter: Prof. Jun XING, Vice President for Programmes, United Board for Christian Higher Education in Asia</p>		
P.M. 12:00 – 1:30	Lunch hosted by the Office of Service-Learning (Student Canteen, Amenities Building LU)		
2:00 – 4:00	Breakout Session (1) Service and Learning: What Are the Students' Experiences? (MBG06, Main Building, LU)	Breakout Session (2) Institutionalization of Service-Learning (MBG07, Main Building, LU)	Breakout Session (3) The Building of a Harmonious Society and the Nature of Partnership Between Community and Institution of Higher Learning (MBG19, Main Building, LU)
4:00 – 5:30	Tea Break (Yu Kan Hing Memorial Garden, LU)		
	Poster Presentation (Wing On Plaza, LU)		
6:30 – 9:00	Welcoming Dinner with Keynote Speech and Cultural Performance (Grand Ballroom, Gold Coast Hotel)		

CONFERENCE SCHEDULE-AT-A-GLANCE

1 June 2007 (Friday)		
A.M. 8:30 – 9:30	Conference Registration (MBG09, Main Building, LU)	
9:30 – 11:30	<p>Plenary Session 2 Cross-Cultural, Cross-Sectors, Cross-Countries, Experiences in Organizing Service-Learning Programmes (MBG22, Main Building, LU)</p> <p>Travel Experiences Enhanced Through Service Learning Presenter: Mr. Denis SIMOND, CEO & Executive Director Odyssey Travel, A Division of the Australian & New Zealand College for Seniors Ltd, Australia</p> <p>Ancient Texts and Modern Education: Some Service-Learning Concepts in South Asia Presenter: Dr. Kalyan RAY, Director of India Programme, IPS-L, and Professor of Tagore-Gandhi Institute of Culture Studies and Service-Learning, Kolkata, India</p> <p>International Service Learning and Multi-Cultural Symbiosis: The Siliman-International Christian University S-L Model Programme Presenter: Prof. Yutaka SATO, Division of Languages, International Christian University, Japan</p>	
P.M. 12:00 – 1:30	Lunch hosted by the Office of Service-Learning (Student Canteen, Amenities Building, LU)	
2:00 – 4:00	Breakout Session (4) Service-Learning Models in the Asia- Pacific Region: Implication on Theory and Practice (MBG06, Main Building, LU)	Breakout Session (5) Research Design and Findings on the Impact of Service-Learning (MBG07, Main Building, LU)
4:00 – 5:30	Tea Break (Yu Kan Hing Memorial Garden, LU)	
	Poster Presentation (Wing On Plaza, LU)	
6:30 – 9:00	Explore Tuen Mun & Yuen Long followed by dinner (Gather at Main Entrance, LU)	

2 June 2007 (Saturday)		
A.M. – P.M. 6:00 – 12:00	Hostel Check-out (Hall B, Student Hostel, LU)	
9:45 – 5:00	Post-Conference Activities (Gather at Main Entrance, LU)	

CONFERENCE SCHEDULE IN DETAILS

31 May, 2007 (Thursday)	
A.M. 9:30 to 10:00	Opening Ceremony
<u>Plenary Session 1 <THEORY>:</u> <u>ESTABLISHING A GLOBAL PERSPECTIVE FOR SERVICE-LEARNING</u> Moderator: Prof. Alfred CHAN, Director of Office of Service-Learning, Lingnan University, Hong Kong	
10:00 to 12:00	<p>Youth Development in Asia: Education, Participation and Public Services Presenter: Dr. Kim Xuan Thi NGUYEN, <i>Population and Social Integration Section Emerging Social Issues Division, United Nations Economic and Social Commission for Asia and the Pacific (ESCAP)</i></p> <p>The presentation provides an overview of the youth situation in Asia and the challenges for youth development, particularly with regard to changing development needs of young people as they relate to their education in preparation for their future life, and their meaningful participation in decision-making processes in society and communities. The presentation also discusses young people's participation in public services both as part of their contribution to society and as part of their learning for the future. In analysing the linkages between these areas, the presentation will discuss emerging concerns and lessons learned from the practices and policies of different countries in promoting youth development and participation.</p> <p>Win, Win, Win: For the Learner, the Community and the University Presenter: Prof. Jane S. PERMAUL, <i>Assistant Vice Chancellor Emeritus, Student Affairs and Adjunct Professor, Education, University of California Los Angeles, CA, USA, Trustee of Lingnan Foundation</i></p> <p>Reflecting on her involvement in the development of service-learning for American higher education, Professor Permaul has learned that service-learning, when practiced serves society, the learner and the educational institution extremely well. She finds that service-learning as a pedagogy is very compatible with most learning and developmental theories. She further finds that service-learning is a powerful instructional tool, while fulfilling many social challenges and needs.</p> <p>Local Goes Global: Service-Learning and Cross-Cultural Competency Presenter: Prof. Jun XING, <i>Vice President for Programmes, The United Board for Christian Higher Education in Asia.</i></p> <p>Service learning, when properly implemented, can become a powerful pedagogy in developing students' (and faculty's) cross-cultural competency and prepare them to deal with a world that is increasingly globalise but deeply divided by racial, ethnic, cultural and religious differences. Professor Xing will highlight both the promises and challenges of the international service-learning movement. He will also discuss principles of good practice in service-learning such as empowerment, capacity building, equity and sustainability.</p> <p>Q & A</p>
12:00 to 1:30	Lunch

CONFERENCE SCHEDULE IN DETAILS

<p><u>Breakout Session and Discussion 1 <PRACTICE>:</u> <u>SERVICE AND LEARNING: WHAT ARE THE STUDENTS' EXPERIENCES?</u> Moderator: Dr. Joe CHING, Director, Lingnan Institute of Further Education (LIFE), Lingnan University, Hong Kong</p>	
P.M.	<p>Introduction (Moderator)</p> <p>Our Stories as Hong Kong Summer Service Programme Fellows Presenters: Ms. Lucy WANG Lu, Ms. Crystal LIU Yan, and Ms. Julie ZHOU Wen Yuan, China</p> <p>Our Stories of W.T. Chan's Fellowship Programme in UCLA/UCB Presenters: Ms. Stephy HUANG and Ms. Jasmine CHEN, W.T. Chan's Fellows, China</p> <p>Service-Learning Programmes in Hong Kong: From Kindergartens to Secondary Schools. Presenters: Prof. CHAN Cheung Ming Alfred, Ms. FUNG Yuk Yin, Ms. MAU Siu Kwan, Ms. FONG Meng Soi, Dr. MA Hok Ka Carol, Mr. LAM Kai Yin and Ms. CHAN Suk Wai, Lingnan University, Hong Kong</p> <p>2:00 to 4:00 Wisdom from the Mountains: When Students and Indigenous People Engage in the Dialogue of Life. Presenter: Mr. Roberto GUEVARA, Assistant Professor, Theology Department, Ateneo De Manila University, Philippines</p> <p>Creating an Effective Learning Experience from Affectionate Service: Service-Learning Curriculum at Fu Jen Catholic University Presenter: Mr. YEN Jen Chi, David, Director, Jesuit Mission Office, Fu Jen Catholic University, Taiwan</p> <p>Reflections on Effective International Service Learning Programme Presenter: Mr. Dennis LEE, Regional Vice President and Managing Director. Asia, Students in Free Enterprise(SIFE), Singapore</p> <p>Leadership and Difference: the Alternative Discourses of Gandhi's Hind Swaraj and Tagore's Nationalism Presenter: Prof. Krishna SEN, Professor, Department of English, University of Calcutta, India</p> <p>Q & A</p>
<p><u>Breakout Session and Discussion 2 <PRACTICE></u> <u>INSTITUTIONALIZATION OF SERVICE-LEARNING</u> Moderator: Prof. EOYANG, Eugene Chen, Chair Professor of Humanities & Head, Dean of General Education, Lingnan University, Hong Kong</p>	
P.M.	<p>Introduction (Moderator)</p> <p>Project SEE (Students for Equality and Equity) - An International Service-Learning Project at the University of Hong Kong Presenter: Dr. CHAU Wai Lap, Dean of Students Affairs and Director of General Education, The University of Hong Kong, Hong Kong</p> <p>International Partnership in Service-Learning - Institutionalisation of Service-Learning in India (Tagore – Gandhi Institute and Loreto College) Presenter: Dr. Ranjana BANERJEE, Reader, Head, Department of Education, Loreto College, India</p> <p>CSLP as An Institutionalized Project for Student Learning Presenter: Mrs. Dorinda FUNG, Director, Student Affairs Office, The Hong Kong Polytechnic University, Hong Kong</p> <p>2:00 to 4:00 An Internationalization of Service-Learning: The Trinity University of Asia Model Presenter: Dr. Cesar D ORSAL, Dean of the College of Arts and Sciences / Director of Philippine Program: International Partnership for Service-Learning, Trinity University of Asia, Philippines</p> <p>Reflections on Service-Learning in University Financial and Managerial Accounting Courses Presenter: Dr. Darwin YU, Associate Professor, John Gokongwei School of Management, Ateneo De Manila University, Philippines</p> <p>Q & A</p>

Breakout Session and Discussion 3 <PRACTICE>

THE BUILDING OF A HARMONIOUS SOCIETY AND THE NATURE OF PARTNERSHIP BETWEEN COMMUNITY AND INSTITUTION OF HIGHER LEARNING

Moderator: Mr. LIM Pho Chye, Director, Deloitte Touche Tohmatsu

P.M.	Introduction (Moderator)
	Lyceum of the Philippines University Community Involvement Presenter: Mr. Lizandro FERRER, Head of Community Outreach and Service-Learning, Lyceum of the Philippines University, Philippines
	Building a Harmonious Society Through Community-College Partnership Presenters: Prof. Johnny JOSEPH, Professor in Botany, Coordinator, Centre for Social Action, Christ College, India Mr. Antony RAJU. V, Project Officer, Centre for Social Action, Christ College, India
	The Building of Cross-Cultural Understanding Between Petra Christian University and its Community Through English: Teaching Programmes for Elementary School Student Presenter: Mrs. Yuli Christiana YOEDO, Head of English Department, Petra Christian University, Indonesia
2:00 to 4:00	The Role of Service-Learning in the Development of Social Entrepreneurs Presenter: Mr. YEUNG Wai-Hon, Lecturer, Department of Textiles & Clothing, Fu Jen Catholic University, Taiwan
	Q & A

Poster Section 4:00 to 5:30

1. The Study of Students' Service-Learning in St. John's University

Presenters:

Mrs. CHIA Ta-ling, Master Degree Student, National Taiwan Normal University, Taiwan

Ms. CHANG Yu-Jung, Master Degree Student, National Taiwan Normal University, Taiwan

2. Full-Scale Implementation of Character Education by a Freshmen Service-Learning Course: An Example of Providence University, Taiwan

Presenters:

Dr. HU Yih-pei, Centre for Service Learning Development, Providence University, Taiwan

Ms. CHEN Ying Jung, Centre for Service Learning Development, Providence University, Taiwan

3. Integrating Service Education into the Teachers' Training Curriculum

Presenter: Dr. LAI Kwok Hung, Senior Student Affairs Officer, Hong Kong Institute of Education, Hong Kong

4. A Model of Campus-Community Partnership for Higher Education Based on College Students' Guiding Elementary School Club Activity in Taiwan

Presenter: Dr. LIU Hsing Yuan, Professor and Dean of Student Affair, Chang Gung Institute of Technology, School of Nursing, Taiwan

5. Role of Service-Learning in Water Quality Studies

Presenter: Dr. Wilfred Sugumar RICHARDS, Dean, Student Affairs, Department of Chemistry, Madras Christian College, India

6. The E-Service-Learning Model in Chung Yuan Christian University: Taiwan's experience

Presenters:

Mr. CHENG Wan-Lee, President, Chung Yaun Christian University, Taiwan

Mr. WU Chao-Ming, Associate Professor, Chung Yaun Christian University, Taiwan

7. A Service-Learning Case to Bridge the Digital Divide: To Promote the Homestay and Trip Package of Pai-Lan Tribe by ICT for Taiwan Aboriginal People

Presenter: Mr. WU Chao-Ming, Associate Professor, Chung Yaun Christian University, Taiwan

8. Demonstration of Newly Developed Low Cost Complementary Foods to Pregnant and Lactating Mothers, Women's Christian College

Presenter: Mrs. Annette Beatrice DHANARAJ, Lecturer, Department of Home Science, Women's Christian College, India

CONFERENCE SCHEDULE IN DETAILS

Poster Section 4:00 to 5:30 (Continued)

9. Partnership with Communities for Service-Learning

Presenter: Mr. Charm MAYOT, Director, St. Martin's Centre for Professional Ethnic and Service-Learning, Student Affairs, Assumption University, Thailand

10. Cross-Cultural Service-Learning: A strategy for 'Conscientization' in the Global Era

Presenter: Prof. Miriam SAMUEL, Head, Department of Social Work, Madras Christian College, India

11. Service-Learning Models in Asia-Pacific Region (LDC Models)

Presenters:

Prof. J. CHITHRA, Lecturer, Department of Mathematics, Lady Doak College, India

Dr. Helen Mary JACQUELINE M, Lecturer, Department of Economics, Lady Doak College, India

12. Service-Learning and "Social Practice" — A Case Study of Volunteer Teaching of Nanjing University

Presenter: Ms. HE Yuan, Junior Student of English Department, Nanjing University

1 June, 2007 (Friday)

Plenary and Discussion Session 2 <PRACTICE>

CROSS-CULTURAL, CROSS-SECTORS, CROSS-COUNTRIES EXPERIENCES IN ORGANIZING SERVICE-LEARNING PROGRAMMES

Moderator: Prof. T.S CHAN, Associate Vice-President, Lingnan University, Hong Kong

<p>A.M.</p>	<p>Travel Experiences Enhanced Through Service Learning Presenter: Mr. Denis SIMOND, <i>CEO & Executive Director Odyssey Travel, A Division of the Australian & New Zealand College for Seniors Ltd, Australia</i></p> <p>In travel, service learning combines tasks with structured travel activities that are linked to community service projects and/or specific organisational needs. Odyssey Travel, which has traditionally specialised in cultural and heritage programmes for over 45 years, now operates Research and Service programmes throughout the world.</p> <p>Ancient Texts and Modern Education: Some Service-Learning Concepts in South Asia Presenter: Dr. Kalyan RAY, <i>Director of India Programme, IPS-L, and Professor of Tagore-Gandhi Institute of Culture Studies and Service-Learning, Kolkata, India</i></p> <p>Fundamentally different from Freudian ideas of Self which predicate much of global -- and mostly Western -- analysis of societal concerns and issues, there is a profoundly influential Asian alternative to the view of the Self. Ancient Sanskrit texts, such as the Upanishads, offer very different foci and explication of the idea of the Self, its relation to education and to each others in society, and the fundamental connection to Service-Learning. These ancient Sanskrit texts have also deeply influenced early Buddhist philosophy. Dr. Ray's presentation explores these concepts from the Taittiriya Upanishad and their influence on ideas of social connectivity and action in the context of a great part of South Asia.</p>
<p>9:30 to 11:30</p>	<p>International Service Learning and Multi-Cultural Symbiosis: The Silliman-International Christian University S-L Model Programme Presenter: Prof. Yutaka SATO, <i>Director of Service-Learning Centre and Professor of Division of Languages, International Christian University, Japan</i></p> <p>In this paper, Prof. Sato reports on the activities they have done so far to develop not only service-learning curriculum, programmes, and activities in their own institution (International Christian University) but also networking and exchange of students among institutions in East Asia. In particular, Prof. Sato will report on a Service-Learning model programme at Dumaguete, the Philippines, in which forty students and faculty/staff from six institutions in Asia participated to learn to live and do communal services together with people from different cultural backgrounds. The idea of Multi-Cultural Symbiosis was emphasized in this S-L Model Programme.</p> <p>Q & A</p>
<p>11:30 – 11:45</p>	<p>Conference Summing Up and Ways Forward</p>
<p>12:00 to 1:30</p>	<p>Lunch</p>

CONFERENCE SCHEDULE IN DETAILS

Breakout Session and Discussion 4 <THEORY & PRACTICE>

SERVICE-LEARNING MODELS IN THE ASIA-PACIFIC REGION: IMPLICATION OF THEORY AND PRACTICE

Moderator: Dr. Betty CERNOL-McCANN, Ph.D. Associate Vice President for Programmes, The United Board for Christian Higher Education in Asia

P.M.	<p>Introduction (Moderator)</p> <p>The Challenges and Possibilities of Service-Learning in Myanmar (Burma) Presenter: Mr. Brian MACHARG, Director of Service-Learning and Adj. Professor, Eckerd College, USA</p> <p>The Origin and Development of A Disciplined-Based Model of S-L in Osaka, Japan Presenter: Ms. Linda Diane MUSSELWHITE, Assistant Professor of Music Sciences & Humanities, ST. Scholastica's College, Japan</p> <p>The Impact of the Service-Learning Program Implemented in the Dormitories at National Taiwan University on the Successful Transitions of Freshmen Presenter: Dr. LIU Ruo-Lan, Associate Professor, General Education Centre, Chang Gung Institute of Technology, Taiwan</p> <p>The ATDI Story: Community Service Learning with Application of Professional Skills and Knowledge Presenter: Dr. LEUNG Chi-Kin, Assistant Professor, Department of Electronic and Information Engineering, The Hong Kong Polytechnic University, Hong Kong</p> <p>Service-Learning Models in Asia-Pacific Region Presenter: Ms. Maria Agnes, CERINA, OSB, Social Action Director , ST. Scholastica's College, Philippines</p> <p>Q & A</p>
2:00 to 4:00	

Breakout Session and Discussion 5 <THEORY & PRACTICE>

RESEARCH DESIGN AND FINDINGS ON THE IMPACT OF SERVICE-LEARNING

Moderator: Dr. Enrique G ORACION, Sociology-Anthropology Department, Silliman University, Philippines

P.M.	
2:00 to 4:00	<p>Introduction (Moderator)</p> <p>An Assessment of the Praxis Programme at the Ateneo De Manila University Presenter: Mr. Leland Joseph DELA CRUZ, Coordinator for Faculty Social Involvement, Director of the Development Studies Programme, Assistant Professor, Loyola Schools, Ateneo De Manila University, Philippines</p> <p>Incorporating the Component of Research into Service-Learning Presenters: Dr. LAU Tai Shing, Programme Coordinator, Service-Learning Programme, Chung Chi College, The Chinese University of Hong Kong, Hong Kong Ms. Charlotte WONG King Fun, Project Coordinator, Chung Chi College, The Chinese University of Hong Kong, Hong Kong Ms. Clare TSANG Choi Har, Project Coordinator, Dean of Students' Office, Chung Chi College, The Chinese University of Hong Kong, Hong Kong</p> <p>The Implementation and Learning Effects of Service-Learning Programme to Increasing the Nursing Capability Among Nursing Students Presenters: Dr. LIU Hsing Yuan, Professor, Dean of Student Affair, Chang Gung Institute of Technology, School of Nursing, Taiwan Ms. CHANG Yi-Ya, Associate Professor, Chang Gung Institute of Technology, School of Nursing, Taiwan</p> <p>Making Service-Learning Integral to Secondary School Curriculum: The Experience of Tsung Tsin College Presenter: Dr. Robin Man-Biu CHEUNG, Principal, Tsung Tsin College, Hong Kong</p>

<u>Breakout Session and Discussion 5 <THEORY & PRACTICE></u> RESEARCH DESIGN AND FINDINGS ON THE IMPACT OF SERVICE-LEARNING (Continued) Moderator: Dr. Enrique G ORACION, Sociology-Anthropology Department, Silliman University, Philippines	
P.M. 2:00 to 4:00	Impact of Intercultural Service-Learning on Students: A Quantitative Self-Evaluation Presenter: Dr. Enrique G ORACION, Faculty Member, Silliman University, Philippines An Exploration of Knowledge-Sharing Based Study Group via the Internet Platform - Exemplified by An Alliance Between University and Primary School Presenter: Dr. YANG Bai Chuan, Associate Professor, Department of Business Administration, Fu Jen Catholic University, Taiwan Q & A
<u>Poster Section 4:00 to 5:30</u> 1. Service-Learning Experiences in a Dalit Community Presenter: Mr. Baby PAUL, Lecturer, Department of Electronics , Baseliros Paulose II Catholicose College South India 2. Health Practicum for BS Health Sciences: Identifying Service-Learning Opportunities Presenter: Dr. Norman Dennis MARQUEZ, Programme Director, Health Sciences Programme, Ateneo De Manila University, Philippines 3.The Implementation of Service-Learning in Taiwan College Student Club Presenter: Mrs. LIU LEE Yen Mei, Doctoral degree program 2nd year student , National Taiwan Normal University, Taiwan 4. Implementing Service Learning in the Location of Earthquake Disaster Presenter: Ms. Lucia Dwi KRISNAWATI, MA/Researcher and Lecturer, The Office of Research and Community Development, Duta Wacana Christian University, Indonesia 5. Building Healthy Homes for the Community Around Campus Through S-L – A Model of Collaboration Between University, Community, and NGO Presenter: Dr. Juliana ANGGONO, Head of Institute of Research and Community Outreach, Petra Christian University, Indonesia 6. Service Learning (S-L) on A Shoestring Presenter: Prof. Thomas KROMER, Teacher Education and Professional Development, Central Michigan University (CMU), MI, USA	

INFORMATION FOR PRESENTERS

Conference Language

The official language of the Conference is English. No interpretation services will be provided.

Panel Presentation

The auditorium in the Conference Venue will be equipped with the following AV Equipments:

- Laser pointer
- Microphones at the lectern
- Clip microphone
- Laptop with MS Office (including PowerPoint presentation software)
- Projector

You are welcome to bring your own laptop. However, please preview your materials and make sure to visit the technicians at least 30 minutes prior to your actual presentation in order to deliver your CD to the technicians and ensure that the right equipment is in place. Should your session take place in the morning, please deliver the CD the day before your presentation.

Please note that slide presentations will not be available.

Poster Presentation

1. Presenters are expected to bring their poster presentation materials to the Conference. Preparation will start from 8:15 a.m. until 6 p.m. on 30 May.
2. All poster boards will be ready for use at the cover area of MBG22 (Conference Map no. 2).
3. Boards will be arranged by the presentation sequence. Please check your presentation no. and use the allocated board.
4. Presenters are responsible for posting and removing of their own materials.
5. Audio-visual equipment may not be used.

The poster presentation will be on display at the Wing On Plaza (or at the Leung Fong Oi Wan Art Gallery on 2/F Main Building if weather is a concern) for the whole period of the Conference.

EXHIBITIONS

Office of Service-Learning of Lingnan University is pleased to have four of our service-learning partners present throughout the entire exhibition located at the Wing On Plaza:

Evangelical Lutheran Church Hong Kong (ELCHK) – Tuen Mun Integrated Elderly Service

Tel: (+852) 2467 2620

Fax: (+852) 2463 9998

St. James' Settlement (Rehabilitation Services Employment Office)

Tel: (+852) 2835 4367

Fax: (+852) 2803 4043

Tung Wah Group of Hospitals (Tai Tung Pui Day Care Centre for the Elderly)

Tel: (+852) 2450 8207

Fax: (+852) 2441 5382

Yunnan Corner by Office of Service-Learning, Lingnan University, and Social Work Programme, Yunnan University

Tel: (+86 871) 503 0929

Fax: (+86 871) 503 0929

Yunnan Corner

1. Citizen's Responsibility Education through Service-Learning: A Village Adoption Project in Yunnan, China

Office of Service-Learning, Lingnan University and Deloitte Touche Tohmatsu

The objectives of the Service-Learning Projects in Yunnan are:

(1) To raise deeper awareness and appreciation of the contribution of Chinese culture and history among the younger generation in order to instill and develop their sense of national identity; (2) To promote deeper awareness and appreciation of the diversity of ethnic groups and their cultures within China through promoting interaction, in particular and as an example, between Yunnan and Hong Kong; (3) To study, promote and facilitate a sustainable development approach to the cultural and economic development of the selected village in the Mainland which has as its objectives the conservation of the special attributes of the local culture as well as assisting the necessary advancements in public education, health and economic development as well as that of the environment and sustainable development which are the cornerstones of a community's longevity; And (4) to promote and enhance the culture and commitment to social responsibility among the Project participants drawn from Deloitte and Lingnan through pro-active participation in the Project in Yunnan, China.

2. Towards Development of a Service Learning Culture in China - On Service-Learning Programme in Yunnan University

The Social Work Programme of Yunnan University started in July 2006 through the support of the United Board of Christian Higher Education in Asia. The development of the Programme involved two key processes: exploration and consolidation of social work education in the southwest China, and service learning models in higher education within China. The Programme aims to nurture and develop a service learning culture that is critical reflexive and one that is based on values of care and love for others. The Programme curriculum was developed with the extensive input from teaching staff, students and social workers from community organizations. A support network is being developed. The network is composed of constructing a website on service learning, and developing a resource center, newsletters, and workshops on service learning.

MEETING ARRANGEMENTS

- Date:** Wednesday, 30 May [Pre-Conference Workshop]
Venue: SO 102
Ho Sin Hang Building, LU (Map no. 5)
Time: 9:00 a.m. – 6:00 p.m.
- Date:** Saturday, 2 June [UB Guests Meeting]
Venue: GE101
B.Y. Lam Building, LU (Map no. 6)
Time: 4:00 p.m. – 5:30 p.m.
- Date:** Saturday, 2 June [W.T. Chan's Fellows' Reunion Dinner]
Venue: Kingswood Club Restaurant, P/F, Kingswood Club Block,
No. 1 Tin Wu Road, Tin Shui Wai, Yuen Long, N.T.
Time: 6:30 p.m. – 9:30 p.m.

REGISTRATION

Entitlements

Delegates' registration includes:

- ☐ Conference Programme
- ☐ Conference Presentation Summaries
- ☐ Name Badge
- ☐ Abstract CD

Registration & Information Desk

Date	Opening Hours	Venue
Tuesday 29 May	2:00 p.m. – 6:00 p.m.	MBG09, LU
Wednesday 30 May	8:30 a.m. – 6:00 p.m.	MBG09, LU
Thursday 31 May	8:30 a.m. – 6:00 p.m.	MBG09, LU
Friday 1 June	8:30 a.m. – 6:00 p.m.	MBG09, LU

Message Board

A message board is located in the information area. Messages for attendees can be posted on the board. Please check the board periodically.

Internet Services

A computer lab for complimentary internet services is located at room BU321 (Teaching and Computer Laboratory) on the 3/F floor of the Ho Sin Hang Building (LU Map no. 8) of the Lingnan University.

Insurance

The organizer cannot accept responsibility for accidents that might occur. Delegates are encouraged to purchase travel insurance prior to leaving their home countries. Insurance plans typically cover accidental loss of belongings, medical costs in case of injury or illness, and other possible risks pertaining to international travel.

Currency Exchange

Most foreign currencies and travellers' checks are easily exchanged at local banks. Money exchange can be done in bank or moneychanger at the Hong Kong International Airport. It is possible to change money once you reach the Arrivals Hall. Please note that banks and moneychangers do charge a commission for money exchange. Unless you are arriving on a weekend or public holiday, you can change at the mini bank on Lingnan campus (G/F, Main Building) during regular office hours. However, you may wish to obtain a small amount of cash before the bank opens. For details on banking and financial matters, please check with the bank at (+852) 2453 2383.

Electricity

The standard electrical voltage in HK is 220 volts AC, 50HZ, so you will need an adaptor for your 100-volt appliances and electrical equipment. The majority of electrical outlets in Hong Kong take a three-pronged plug. Participants with laptops, digital cameras, and cellular phone, should purchase an adaptor in advance.

Emergency Contacts

Dr. Carol MA (+852) 9550 9279
Ms. Carrie HO (+852) 6194 2112

ACCOMMODATION

Harbour Plaza Resort City Hotel

Delegates are advised to check-in to the Hotel directly upon arrival. There is a Hotel Shuttle Bus service at HK\$50 per person:

Airport – Hotel: 6:00 a.m.- 1:00 a.m.

Hotel – Airport: 5:05 a.m.- 00:15 a.m.

In order to facilitate the participants to attend the conference, coach service between Hotel and Lingnan will be provided during the conference, from 31 May to 1 June, at 8:30 a.m.. Please gather at the Hotel Car Park.

Lingnan University's Hostel

On 29 and 30 May, a Hostel Check-in Counter will be set-up at the MBG10, Lingnan University during office hours. The Check-in Counter will relocate to the Entrance of Hall B after 7 p.m..

Each Hostel User will have a room key. A HK\$100 deposit for the key will be collected at Check-in, and refunded at Check-out.

Date	Opening Hours	Venue
Tuesday 29 May	2:00 p.m. – 6:00 p.m.	MBG10, LU
	7:00 p.m. – 12:00 midnight	Entrance of Hall B, LU
Wednesday 30 May	8:30 a.m. – 6:00 p.m.	MBG10, LU
	7:00 p.m. – 12:00 midnight	Entrance of Hall B, LU
Thursday 31 May	8:30 a.m. – 6:00 p.m.	Entrance of Hall B, LU
Friday 1 June	8:30 a.m. – 12:00 noon	Entrance of Hall B, LU
Saturday 2 June	6:00 a.m. – 12:00 noon	Entrance of Hall B, LU
Sunday 3 June	6:00 a.m. – 12:00 noon	Entrance of Hall B, LU
Monday 4 June	8:30 a.m. – 12:00 noon	Entrance of Hall B, LU

All Check-out will be processed at the Entrance of Hall B by 12:00 noon. To avoid long queue, delegates are advised to check-out at 11:00a.m. For security reasons, there is no late check-out for Hostel user. Both Hong Kong International Airport and the Hunghom Train Station provide temporary storage service.

Reminders:

- ❑ Smoking is prohibited in all indoor workplaces and public places; the indoor areas of all restaurants, karaoke establishments and bars open to all age groups; the indoor areas of residential care homes and treatment centres; the entirety of child care centres, schools, hospitals, approved institutions, places of detention or refuge and reformatory schools
- ❑ Students' canteen may not open within 29 May to 2 June. You can find restaurants at the nearby Fu Tai Shopping Arcade.
- ❑ All restaurants in Fu Tai are located on the 2nd floor in Fu Tai Shopping Arcade, which include: Mei King Restaurant, McDonald's, Café Delight, and Fu Tai Seafood Restaurant.

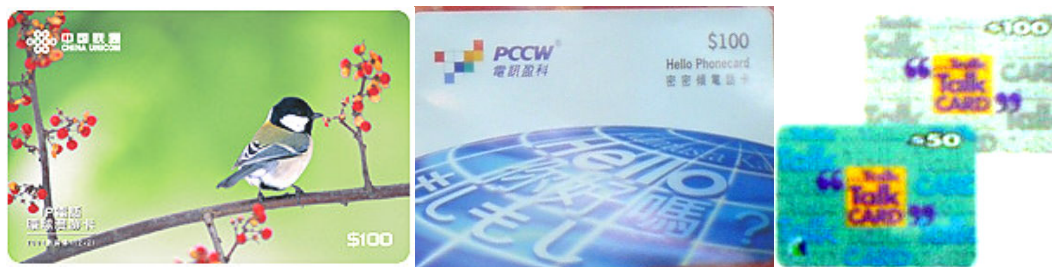


(Fu Tai Shopping arcade)



(Convenient store in Fu Tai)

- ❑ If you would like to use IDD/ long distance service, you may want to acquire a calling card which is available at the convenient store located on the ground floor of Fu Tai Shopping Arcade, next to the bus terminus.



(Samples of the calling cards)

- ❑ Should you need further information, please feel free to seek assistance from our conference helpers

TRANSPORT

How to Reach Lingnan University

Hong Kong has an extensive and reliable network of public transportation. It includes buses, mini buses, trains and taxis. You can get to Lingnan University by bus, mini bus, trains and taxi.

Bus - All the following buses provide services from the city to Lingnan. Octopus card is valid for payment.

No.	Bus Co.	Schedule	Fare (HK\$)	Route	Journey Time (Min.)
67M	KMB	05:30 - 23:37	7.8	Kwai Fong MTR ↔ Siu Hong Court	55
67X	KMB	05:30 - 23:15	10.7	Mong Kok KCR ↔ Siu Hong Court	68
261	KMB	05:50 - 23:15	12	Tin Ping Estate ↔ Sam Sing	58
53	KMB	05:50 – 00:15	8.8	Yuen Long (East) ↔ Tsuen Wan (Nina Tower)	90
K51	KCR	05:45 – 23:45	3.7	Tai Lam ↔ Fu Tai	30 - 40
A73	KCR	06:30 – 09:30 15:00 – 19:00	6.5	Tin Fu ↔ Tuen Mun Ferry Pier	16 - 18

Public Light Bus (Green Line)

46 (Tuen Mun Town Centre ↔ Fu Tai Estate)

Public Light Bus (Red Line)

Yuen Long ↔ Jordan (24 hours daily)

Yuen Long ↔ Tsuen Wan (Citistore) (24 hours daily)

How to Reach Hong Kong Airport

Bus

You may take taxi from Lingnan University to the Tuen Mun Town Centre Bus Terminus (about HKD \$ 30 per journey), then change to Airbus No. E33 (Time: 5:30 a.m. – 12 midnight) to Hong Kong International Airport (HKIA) (HKD \$ 13 per person). The whole journey will take you around one and half hour.

Taxi

You may take a red or green taxi (green is cheaper than the red in your case) at Lingnan University to the Airport Terminus which takes about 40 – 45 minutes and it costs about HKD \$ 270 – 300 per journey (inclusive of bridge/tunnel fees). In addition, a HKD \$ 5 (red taxi)/ HKD \$ 4 (green taxi) will be charged per piece of luggage.

Some explanatory notes about Taxis:

Red taxis operate in most of Hong Kong, except for Tung Chung Road and the south side of Lantau Island;

Green taxis serve the rural areas of the New Territories; and

Blue taxis operate on Lantau Island.

(Taxi passengers using the Lantau Link are required to pay an additional toll fare of HKD \$ 30 irrespective of the direction of travel, and additional fares are also charged for using toll tunnels.)

MEAL ARRANGEMENTS

- **Pre-Conference Workshop Breakfast**
Date: Wednesday, 30 May
Venue: Student Canteen, G/F Amenities Building, LU (Map no. 4)
Time: 8:15 a.m. – 9:00 a.m.
- **Pre-Conference Workshop Lunch & Dinner**
Date: Wednesday, 30 May
Venue: Chinese Restaurant, 1/F Amenities Building, LU
Time: 1:00 p.m. – 2:00 p.m. / 6:30 p.m. – 9:00 p.m.
- **Conference Lunch (Day 1 & 2)**
Date: Thursday, 31 May and Friday, 1 June
Venue: Student Canteen, G/F Amenities Building, LU (Map no. 4)
Time: 12:30 p.m. – 2:00 p.m.
- **Welcoming Dinner (with Keynote Speech and Cultural Performance)**
Date: Thursday, 31 May
Venue: Grand Ballroom, Lower Ground Level, Gold Coast Hotel, Tuen Mun
Time: 6:30 p.m. – 9:00 p.m.
- **Explore Tuen Mun and Yuen Long followed by dinner (paid by the participants)**
Date: Friday, 1 June
Venue: Special choice of local specialities and accompanied by LU Student Ambassadors
Time: 6:30 p.m. – 9:00 p.m.

CULTURAL & TOUR PROGRAMMES

Thursday 31 May 2007, 6:30 p.m. – 9:00 p.m.

Welcoming Dinner & Cultural Performance

OSL and Lingnan University are pleased to invite all the delegates and their registered accompanying persons to a farewell dinner at the Gold Coast Hotel, featured also by a splendid cultural performance.

*** Included in the registration fee*



Friday 1 June 2007, 6:30 p.m. – 9:00 p.m.

Exploring Tuen Mun and Yuen Long followed by dinner

After the first day of the Conference, you are encouraged to continue the evening in Tuen Mun or a nearby new town Yuen Long. Student ambassadors will show you around one of these spectacular new towns inhabited by people from different walks of lives. You will also enjoy a variety of local harvests and cuisines. *** Self-paid*



Saturday 2 June 2007, 9:45 a.m. – 5:00 p.m.

Travelling Tour

After the workshops and site visits, the travelling tour will take you to two beautiful spots of historical and environmental importance: Gold Coast and Ping Shan Heritage Trail. While showing you the distinctive attractiveness of Hong Kong, the Trail and Park demonstrates the cultural heritage and the diversity of Hong Kong's ecosystem - providing a world-class recreational yet educational venue for overseas visitors.

*** Self-paid*



The map illustrates the layout of the University of Hong Kong campus, highlighting various buildings, green spaces, and landmarks. Key features include:

- Buildings and Facilities:**
 - Ho Sin Hang Building (BU321 3/F)
 - Leung Kau Kui Building
 - B.Y. Lam Building (GE101 1/F)
 - Social Sciences Building (Pre-Conf Workshop SO102, 1/F)
 - Amenities Building (Canteen G/F, Chinese Restaurant 1/F)
 - OSL LU
 - Yunnan Uni.
 - St. James'
 - SLRS SLRS
 - ELCHK
 - TWGH
 - Art Gallery (2/F)
 - Tea break
 - MBG 06
 - MBG 07
 - MBG 09
 - MBG 10
 - Bank
 - MBG 22
 - MBG 19 (Toilet Female, Toilet Male)
- Green Spaces and Landmarks:**
 - Garden
 - Wing On Plaza
 - Numbered green spaces (1-9)
 - Fish pond
- Other Features:**
 - Hostel B (indicated by a large arrow)
 - Lift locations (marked with orange squares)
 - Info Desk & First Aid (marked with a yellow square)

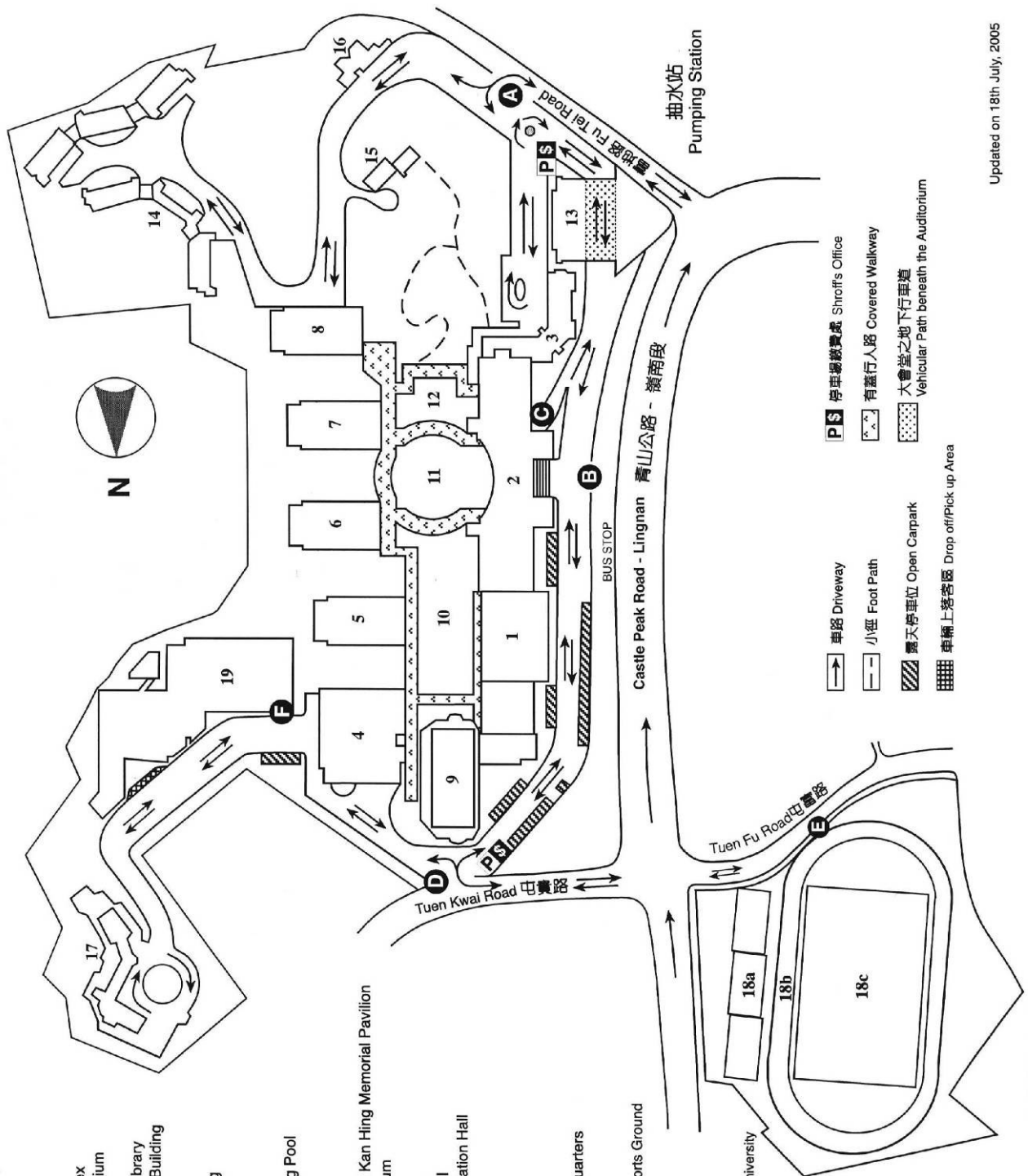
MBG09 – Registration & Information Desk	MBG22 – Opening Ceremony & Plenary Sessions	MBG07 – Seminar 2 & 5	SO102 – Pre-Conf. Workshop
MBG10 – Hostel Check-in	MBG06 – Seminar 1 & 4	MBG19 – Seminar 3	BU321 – Internet Service

MAP OF LINGNAN UNIVERSITY

Campus Map

1. 綜合運動大樓 Indoor Sports Complex
2. 主樓 Main Building
3. 圖書館 Library
4. 康樂樓 Amenities Building
5. 社會科學樓 Social Sciences Building
6. 林炳炎樓 B. Y. Lam Building
7. 梁銑琚樓 Leung Kau Kui Building
8. 何善衡樓 Ho Sin Hang Building
9. 田家炳游泳池 Tin Ka Ping Swimming Pool
10. 現代花園 Contemporary Garden
11. 永安廣場 Wing On Plaza
12. 余近輝紀念園及余近輝紀念亭 Yu Kan Hing Memorial Garden & Yu Kan Hing Memorial Pavilion
13. 陳德泰大會堂 Chan Tak Tai Auditorium
14. 學生宿舍 Student Hostels
15. 蒙民偉樓 William M W Mong Hall
16. 東亞銀行 The Bank of East Asia Hall
17. 香港銀行總匯 Tsung Tsin Association Hall
18. 忠信堂 Chung Shun Hall
19. 慈民堂 Yee Min Hall
20. 林耀堂 Lam Woo Hall
21. 校長寓所 President's Lodge
22. 訪客及職員宿舍 Visitors and Staff Quarters
23. 學生宿舍 Student Hostels
24. 賽馬會會堂 The Jockey Club Hall
25. 室外運動場 Multi-purpose Outdoor Sports Ground
26. 網球場 Tennis Courts
27. 徑賽跑道 Running Track
28. 足球場 Soccer Pitch
29. 新教學大樓 New Academic Block
30. 嶺南大學社區學院 The Community College at Lingnan University
31. 教堂 The Chapel

- A 南門 South Gate
- B 行人路入口 Pedestrian Entrance
- C 地下停車場入口 Underground Parking
- D 北門 North Gate
- E 室外運動場入口 Entrance of Multi-purpose Outdoor Sports Ground
- F 有蓋停車場入口 Covered Car Park



Updated on 18th July, 2005

Serving to Learn Learning to Serve



**Office of Service Learning
Lingnan University**

GE103, General Education Building
Tuen Mun, New Territories, Hong Kong
Telephone: +852 2616 8053
Fax: +852 2468 4807
E-mail: oslconf@ln.edu.hk
Website: www.ln.edu.hk/osl